

### A strong naval partner

Logimatic develops, implements and supports STRATECA - and has a long history of creating maritime automation solutions. We emphasize building and maintaining core competences which are essential in delivering the best possible solutions within the worldwide maritime area.

The range of solutions we develop, deliver and support also covers INSEACON IPMS (Integrated Platform Management System) and CMAS (Control Monitoring Alarm System) as well as customized specializations in relation to energy optimization and automation design. Please visit [www.logimatic.com](http://www.logimatic.com) for more info.

### Here is a selection of what we also offer:

Basic design or specifications for:

- + Shipping companies, shipyards or shipbuilders.

Detailed design:

- + Progress
- + Security system
- + Communication system
- + Electrical design & lighting installation
- + Handling of ballast water
- + Technical purchase specification
- + Sample programs and tests: HAT, SAT, FAT
- + Operating manuals

#### Aalborg

LOGIMATIC  
Sofiendalsvej 5B  
DK9200 Aalborg SV

#### Værløse

LOGIMATIC  
Kirke Værløsevej 20B  
DK3500 Værløse

+45 9634 7000  
[lmce@logimatic.com](mailto:lmce@logimatic.com)

[www.logimatic.com/strateca](http://www.logimatic.com/strateca)



# STRATECA

## Strategic Damage Management



# Strategic Damage Management for Navy Vessels

**STRATECA improves situational awareness built to help manage damage situations.**

## Ensure clear alert priorities

**STRATECA supports real-time connectivity between patrols and ensure clear alert priorities.**

### COMMAND AIM

- A** Operational main objective and top priorities of each command team.

### HIGH PRIORITY ACTIONS

- B** List of most important actions - top 3

### THREAT LEVELS

- C** Specific threat sections. Click toggles between colours / threat level.

### BLANKET SEARCH

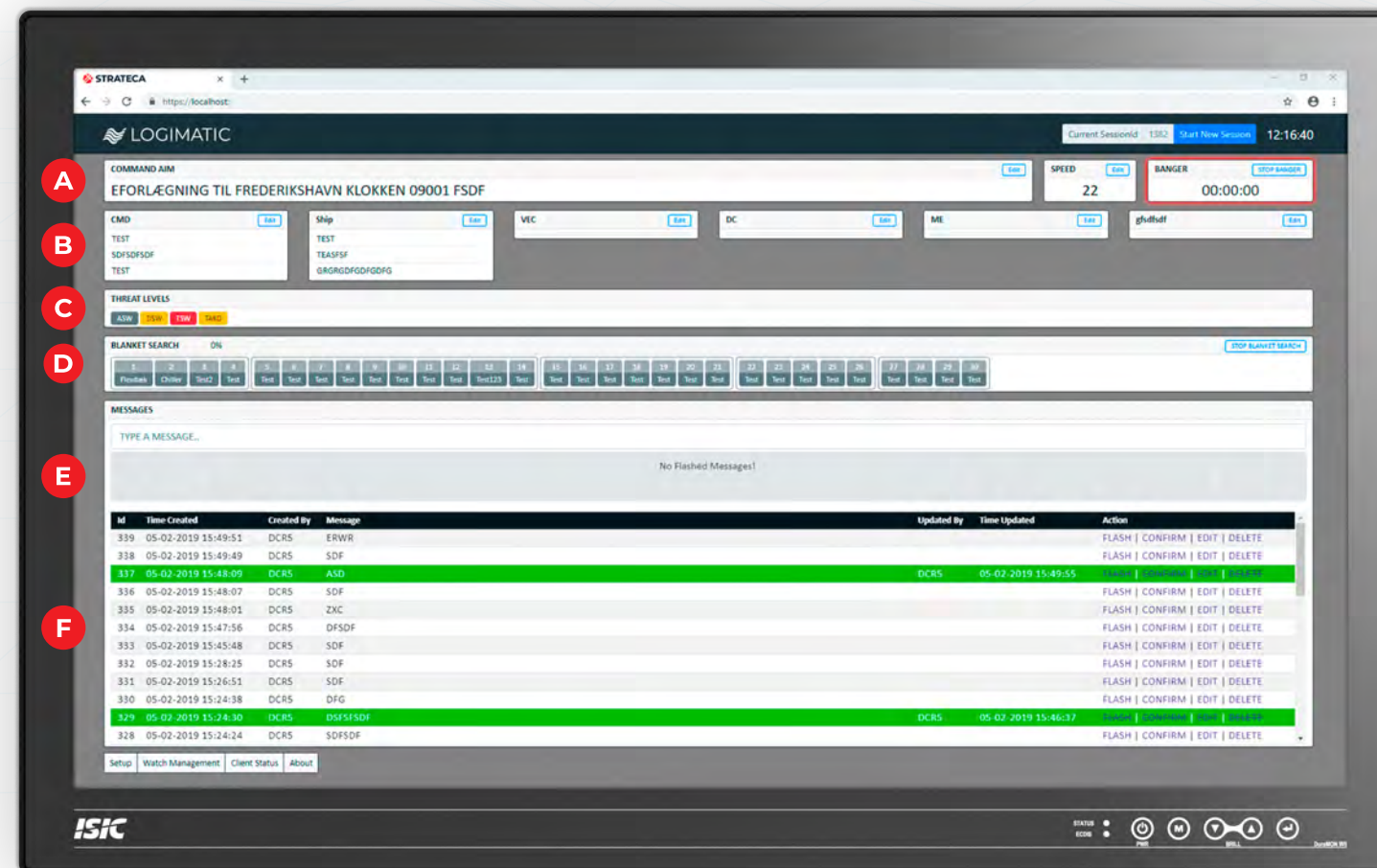
- D** Colour coded status of each search and total completion degree.

### FLASH MESSAGE

- E** Flashed messages shown locally until confirmed on client.

### CHAT FUNCTION

- F** Message list with time and ID-stamp. Confirm/flash messages.



**STRATECA** supplements or even replaces part of the existing radio communication between DC HQ and the patrols. Information is entered and displayed on operator stations and laptops placed on strategic important locations onboard.

### Efficient Damage Management

STRATECA helps taking the right decisions during critical and stressed situations. The system ensures a better and more efficient damage management process that will secure the survivability of the ship for both the conduct of the mission and for the safety of the crew.

## DEMO session

Please ask for at STRATECA demo session. The session will include a short tour around the STRATECA system where we will do our best to meet your questions and needs.



### Advantages

- + Strategic overview of damage control scenarios
- + Connectivity between DC HQ and command teams
- + Improved damage management
- + Standard web technology ensures seamless integration with 3rd party systems.



### Functions

- + Information sharing via operator stations and laptops
- + All relevant information logged for documentation and performance evaluation
- + Standalone system – can also be integrated with existing control system
- + Customizable to meet specific requirements
- + Unlimited number of clients